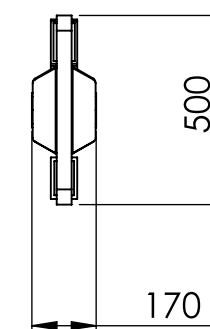
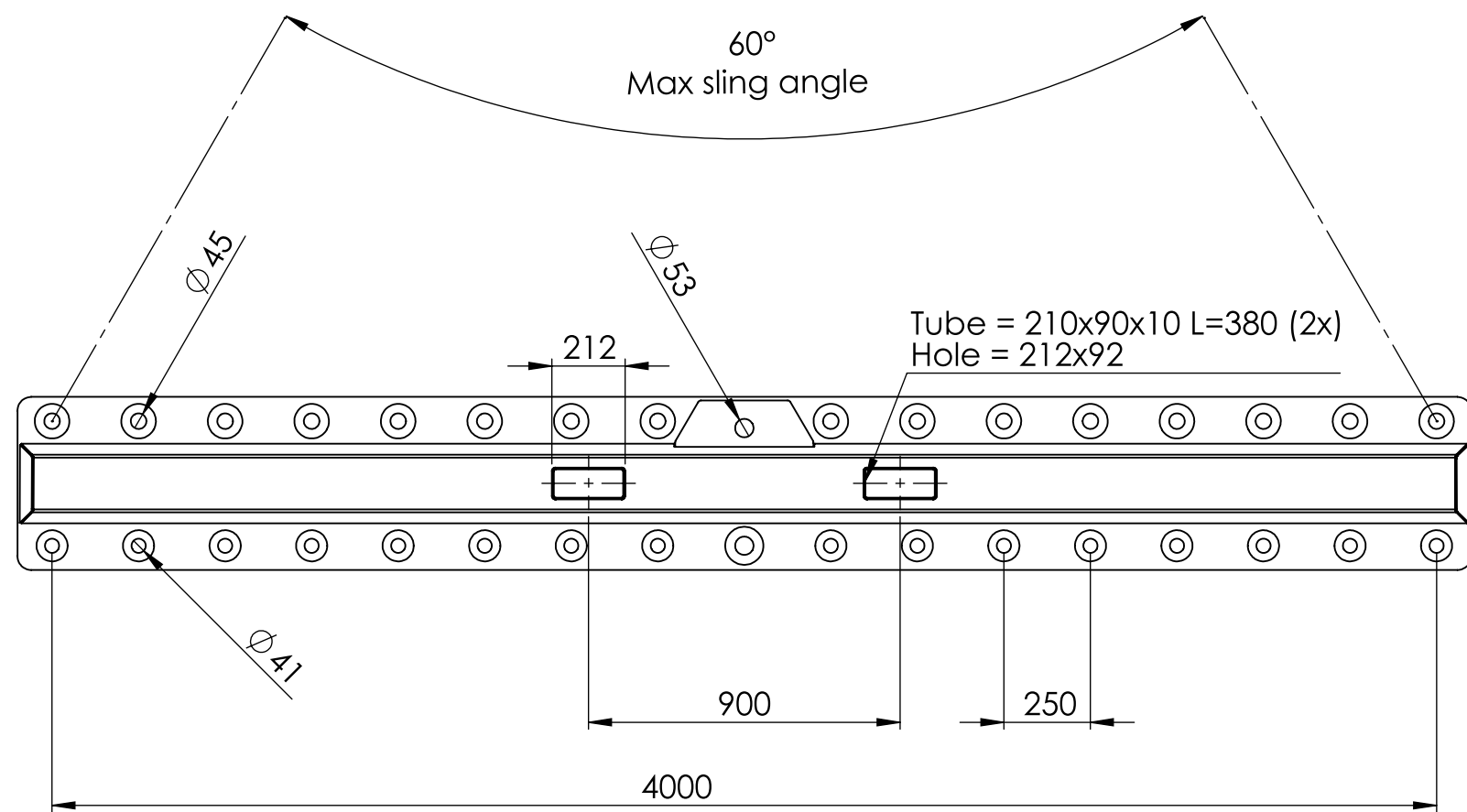
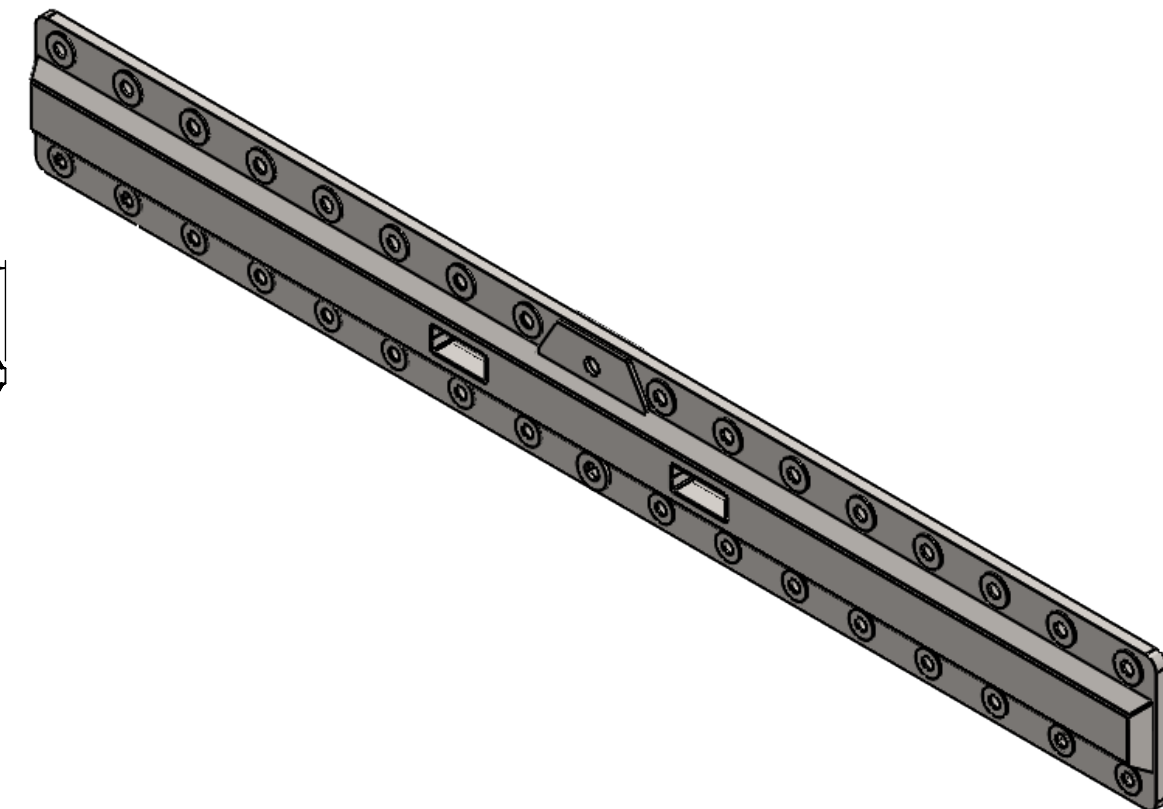
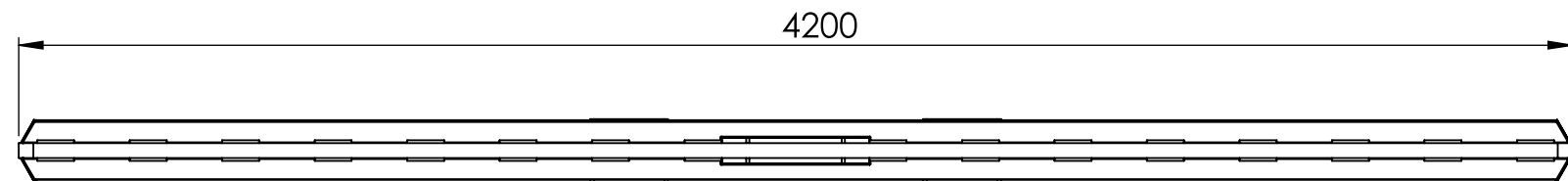


8 7 6 5 4 3 2 1

F
E
D
C
B
A



Lifting beam 25T 4m
 Type: EVK2540.03
 Wll: 25T (25000kg)
 Weight: 1160 kg
 - Top middle lifting points suitable for 25T shackles
 - Top remaining lifting point suitable for 17T shackles
 - bottom lifting points suitable for 13.5T shackles
 - Max sling angle is 60 °

UNLESS OTHERWISE SPECIFIED: DIMENSIONS ARE IN MILLIMETERS		FINISH: Painted		DEBURR AND BREAK SHARP EDGES		DO NOT SCALE DRAWING		REVISION	
SURFACE FINISH: NEN 3634		DATE: 14-2-2019		AMERICAN PROJECTION 		TITLE: EVK2540.03.00			
TOLERANCES: NEN-ISO 1101		DATE: 14-2-2019							
DESIGN: NEN-EN 13155		DRAWN: TVDV		MATERIAL:		DWG NO. EVK2540.03.00		A3	
APPV'D: MTZ		WEIGHT: KG		SCALE: 1:20		SHEET 1 OF 1			



8 7 6 5 4 3 2 1