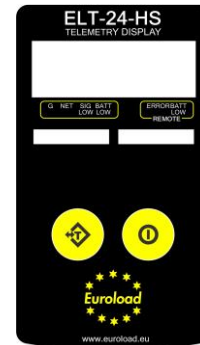




## ELT-24 Telemetry Load Links



Euroload Limited have introduced the ELT-24 range of electronics to our well proven design of load link. With the new improved transmit range of the ELT-24 electronics (up to 800 Meters) we are confident this will be a popular product.

ELT-24 electronics come into there own when the customer wants to do more than just read the load figure. The range of options is extensive including, free software to data log up to 100 cells simultaneously, webserver built into software for remote viewing, analogue output modules, large digit telemetry displays(4"), gateways, relay modules, digital outputs, printer, transmit to mobile phone, wind speed sensors.

With its 2.4 Ghz worldwide exempt transmit frequency, low power consumption, extended range transmitter and extensive option range we feel the new T-24 range is a excellent option for our customers.

The ELT-24 range of electronics is also used on Euroload`s popular ECO shackle range. A low cost high accuracy load shackle from 6.5 to 35 Te.

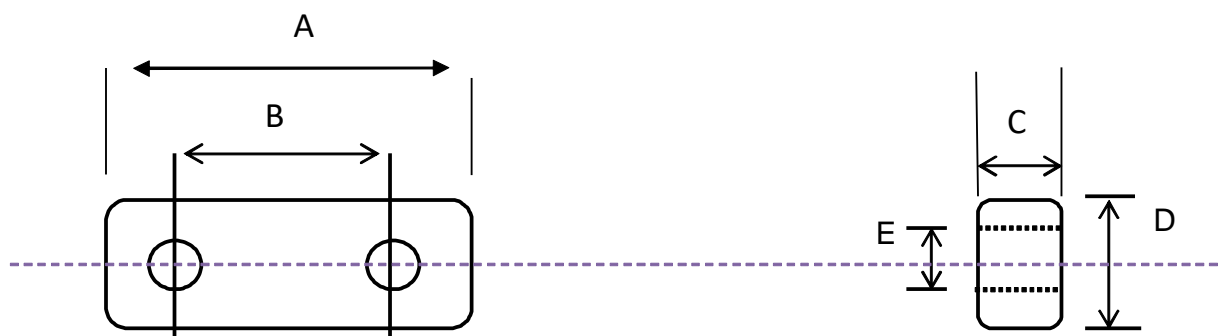
## Euroload Limited Tensile load Link

Euroload offer various ways of reading the information from Tensile load links, ELTC-01 Cabled load cells using cables and connectors to connect the readout.

ELT24 Telemetry output from load cell to receiver handset, data log via laptop. Multiple receivers, displays, software, gateways available.

Bluetooth transmitter to be viewed via a mobile phone to our free app. New 2019.

All of the above options are available on our standard load links, IP68 ingress protection, tested to 14 meter water depth, screw off battery cover, min 5:1 safety factor, ergonomically designed, aerospace grade aluminium, stock to 500 te, larger sizes available on request.



TONNE	A	B	C	D	E	Weight (Kgs)
6.5	304	238	32	117	27	5
13.5	344	250	52	130	40	10
25	416	270	62	136	55	13
35	440	280	70	145	62	14
55	500	280	85	170	75	15
85	588	340	115	188	86	30
100	640	360	120	188	100	34
120	712	400	125	220	100	45
150	790	400	130	254	120	57
200	805	420	160	265	135	115
300	1120	600	180	389	155	220
400	1240	656	200	460	182	350
500	1430	740	220	490	190	TBC

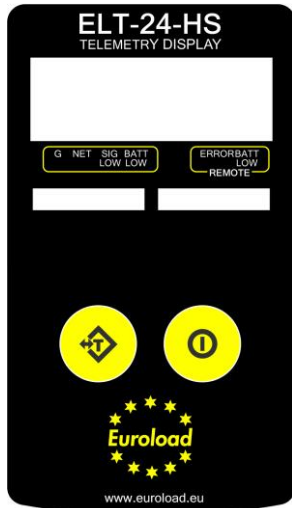
ALL SIZES IN MM





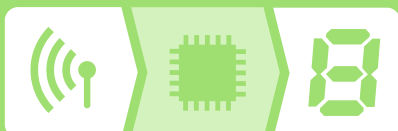
## ELT24-HS

### Wireless Handheld Display For Single Transmitter



#### Product Features

- Simple operation
- Connection to single transmitter module
- Tare function
- Auto shutdown
- Rugged construction



#### Introduction

The T24-HS handheld displays data from any of the T24 wireless transmitter modules and forms part of the T24 modular telemetry system.

The data sent by transmitter modules can be utilised by multiple receivers such as displays, handheld readers, analogue outputs, relay modules and computer interfaces. Receivers support common industrial power supplies and are available in robust IP rated enclosures with internal antennas optimised to give outstanding coverage.

The T24-HS provides a point to point connection to a single transmitter. The transmitter can be woken and sent to sleep as the handheld is turned on or off. Two AA batteries power the handheld which has been designed for low power operation.

The T24 Toolkit software offers a fast and simple way to configure the display format, unit conversion, zero adjustment and transmitter selection.

#### T24 System Overview



T24 Wireless Telemetry Sensor System is a modular wireless solution for industrial sensor applications.

High accuracy, high quality measurement is interfaced with simple yet powerful configuration and monitoring software.