

PT21

Construction: Aerospace-grade aluminium

Capacity: 21,000kg / 46,000lbs

Unit Weight: 10kg / 22lbs

Its lightweight, ergonomic design makes the PT21 unrivalled for flexibility, user comfort and safety.

The PT21 can test:

- Pad eyes, D-rings, eye bolts, anchor points and other lift points
- Concrete Lifting Clutches ○
- Masonry Anchors, chemical and mechanical ○
- Skip/waste bin lift points ○
- Aircraft restraint deck anchors ○

○ Requires additional Test Accessory Kit (TAK)

Actual photo (dimensions overleaf)



Flexibility and choice are at the centre of the PT21 system.

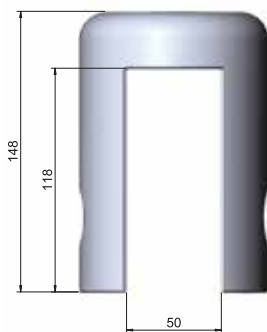
The system starts with the tester itself and consists of an ever expanding range of Test Accessory Kits (TAK) and components.

From different hydraulic pumps and gauges to a variety of carry cases, there is something for every task and everyone.

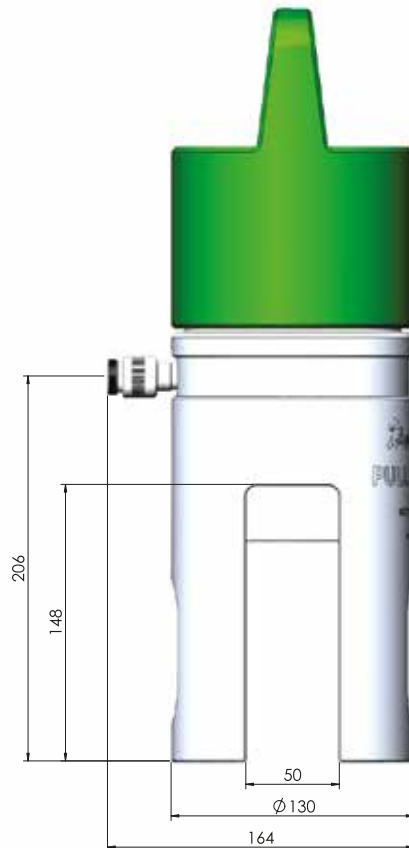


Load Pin Details

Pin	WLL (Te)	Ø (mm)
A	7.2	19
B	12.75	25
C	20	30



Clevis Dimensions (mm)



Main Body Dimensions (mm)

