

MC 70S

RADIO-REMOTE CONTROL ON DRIVING, STEERING, BOOM MOVEMENTS, WINCH AND OTHER ACCESSORIES

FRONT-WHEELS DRIVE WITH COUNTER ROTATION

REMOVABLE COUNTERWEIGHTS

HYDRAULICALLY TELESCOPING SEQUENTIAL TYPE BOOM

TILTABLE HEAD 3 POSITIONS



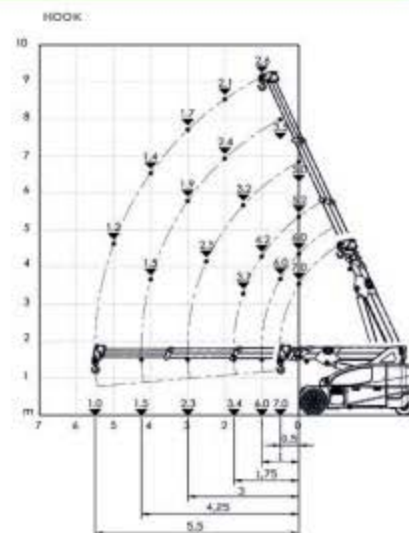
Technical features

Max Capacity kg	7,000
Dimensions mm	3226x1380x1857

Front-wheels drive. 2 electric motors AC 3,5 kW 72V Insulation class H	LML Electronic safe load indicator and tilting moment limiter
Total Kg. 7700 Removable counterweights Kg.3000	Automatic braking system on all wheels
72 V - 640 Ah 8 working hours	Fabricated from preformed and welded quality steel plate
Front nr. 2 superelastic 250-15" Rear nr. 2 superelastic 21x8-9"	+65°/-10°
Rear Steering angle -90°/+90°	Motor driven pump 12 kW - 72 V AC, Insulation class H



Load charts



EU Standards CE

	UNI ISO 4301-2: A1
	2006/42 CE-2014/30 UE-2014/35 UE- 2000/74 and subsequent modifications
	EN 13000:2014 ANSI/ASME B30.5-2011 and subsequent modifications



Dimensions

