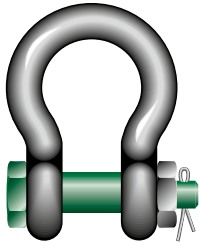




Green Pin® Bow Shackle BN

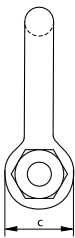
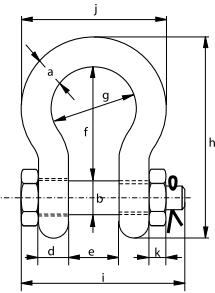
Standard bow shackle with safety bolt

Scan for additional product details



- **Material:** bow and pin high tensile steel, grade 6, quenched and tempered
- **Safety Factor:** MBL equals 6 x WLL
- **Standard:** ISO 2415, EN 13889 and meets performance requirements of US Fed. Spec. RR-C-271 Type IVA Class 3, grade A, from 2 t and upward these shackles comply with ASME B30.26
- **Finish:** hot dipped galvanized
- **Temperature Range:** -40 °C up to +200 °C
- **Certification:** 2.1 2.2 3.1 MTC^a DNV 2.7-1^a * DNV 2.7-1^b * DNV 0378 CE IIA ABS PDA ABS MA
- **Article code:** scan QR code to see article codes

G-4163



working load limit	diameter bow	diameter pin	diameter eye	width eye	width inside	length inside	width bow	length	length bolt	width	thickness nut	weight each
t	a mm	b mm	c mm	d mm	e mm	f mm	g mm	h mm	i mm	j mm	k mm	kg
0.5	7	8	16	7	12	29	20	48	42	34	4	0.06
0.75	9	10	20	9	13.5	32	22	56	50	40	5	0.11
1	10	11	23	10	17	37	26	64	60	46	8	0.16
1.5	11	13	25	11	19	43	29	73	67	51	11	0.22
2	13.5	16	34	13	22	51	32	90	80	59	13	0.42
3.25	16	19	40	16	27	64	43	110	98	75	17	0.74
4.75	19	22	46	19	31	76	51	129	115	89	19	1.18
6.5	22	25	52	22	36	83	58	144	130	102	22	1.77
8.5	25	28	59	25	43	95	68	164	150	118	25	2.58
9.5	28	32	67	28	47	108	75	186	166	131	27	3.66
12	32	35	73	32	51	115	83	201	184	147	30	4.91
13.5	35	38	79	35	57	133	92	227	197	162	33	6.54
17	38	42	88	38	60	146	99	249	202	175	19	8.19
25	45	50	104	45	74	178	126	300	243	216	23	14
35	50	57	112	50	83	197	138	332	269	238	26	18.8
42.5	57	65	132	57	95	222	160	378	301	274	29	28.3
55	65	70	145	65	105	260	180	433	329	310	32	39.6
85	75	83	167	75	127	330	190	530	381	340	39	62

CAD RFID INFO



* For shackles ≥ WLL 2 t