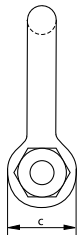
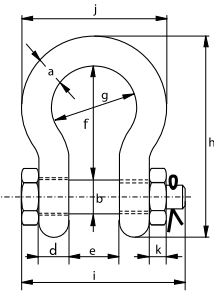


G-5263



Green Pin Super® Bow Shackle BN

Grade 8 bow shackle with safety bolt

- **Material:** bow and pin alloy steel, grade 8, quenched and tempered
- **Safety Factor:** MBL equals 5 x WLL
- **Standard:** ASME B30.26 and meets performance requirements of US Fed. Spec. RR-C-271 Type IVA Class 3, grade B
- **Finish:** hot dipped galvanized (150 t and upward are painted)
- **Temperature Range:** -20 °C up to +200 °C
- **Certification:** 2.1 2.2 3.1 MTC* LROS* CE IIA ABS PDA* ABS MA*
- **Article code:** scan QR code to see article codes

Scan for additional product details



working load limit	diameter bow	diameter pin	diameter eye	width eye	width inside	length inside	width bow	length	length bolt	width	thickness nut	weight each
t	a mm	b mm	c mm	d mm	e mm	f mm	g mm	h mm	i mm	j mm	k mm	kg
3.3	13.5	16	34	13	22	51	32	90	80	59	13	0.40
5	16	19	40	16	27	64	43	110	98	75	17	0.73
7	19	22	46	19	31	76	51	129	115	89	19	1.19
9.5	22	25	52	22	36	83	58	144	130	102	22	1.73
12.5	25	28	59	25	43	95	68	164	150	118	25	2.56
15	28	32	67	28	47	108	75	186	166	131	27	3.60
18	32	35	73	32	51	115	83	201	184	147	30	4.95
21	35	38	79	35	57	133	92	227	197	162	33	6.62
30	38	42	88	38	60	146	99	249	202	175	19	8.11
40	45	50	104	45	74	178	126	300	243	216	23	14.8
55	57	57	119	57	83	197	138	342	283	252	26	24.2
85	70	70	145	70	105	260	180	438	339	320	32	45.1
120	83	83	164	83	127	329	190	537	397	356	39	72
150*	95	95	204	95	147	400	238	644	453	428	50	112
175*	105	108	235	105	169	410	275	686	496	485	50	160

CAD RFID INFO



- * For shackles WLL 150 t and WLL 175 t available with and without LROS
- * With round headed bolt
- * Excluded from ABS Type Approval