

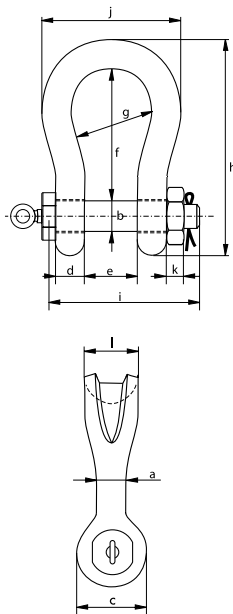


Green Pin® Sling Shackle BN

High load capacity bow shackle with safety bolt



P-6033



- **Material:** bow and pin alloy steel, grade 8, quenched and tempered
- **Safety Factor:** MBL equals 5 x WLL
- **Standard:** ASME B30.26 \leq WLL 600 t
- **Finish:** shackle bow painted silver, pin painted green
(WLL 7 t up to 55 t shackles are hot dipped galvanized)
- **Temperature Range:** -40 °C up to +200 °C \leq WLL 600 t
-20 °C up to +200 °C \geq WLL 700 t
- **Certification:** 2.1 2.2 3.1 MTC^a CE IIA **Optional*****: MTC^b * LROS ** MPI^a US^b
- **Article code:** scan QR code to see article codes

Scan for additional product details



working load limit	diameter body	diameter pin	diameter eye	width eye	width inside	length inside	width bow	length	length bolt	width	thickness nut	bearing surface	weight pin	weight each
t	a mm	b mm	c mm	d mm	e mm	f mm	g mm	h mm	i mm	j mm	k mm	l mm	kg	kg
7	22	22	46	19	32	96	64	153	115	110	19	41	0.99	1.97
12.5	28	28	61	25	44	120	82	197	151	146	24	54	1.82	4.27
18	35	35	69	30	54	148	102	239	171	180	29	64	2.35	6.85
30	40	42	90	35	69	165	126	279	207	200	34	79	4.23	12.5
40	55	51	109	45	84	199	140	331	252	235	38	97	4.32	20.3
55	60	57	115	55	90	240	160	389	294	270	45	100	4.6	30.4
75	68	70	126	54	110	290	185	473	317	331	40	120	11.4	45
125	85	80	156	85	137	366	220	583	413	390	40	150	18.6	92
150	94	95	181	89	147	391	253	648	445	449	50	170	27.3	140
200	110	105	201	100	158	481	280	759	480	500	50	205	36.9	205
250	126	120	229	110	179	542	300	860	535	552	60	240	54.3	264
300	136	134	246	134	195	601	350	946	590	620	70	265	79.4	360
400	160	160	295	145	231	576	370	995	687	710	80	320	127	583
500	170	180	330	160	263	681	450	1161	762	850	90	340	176	862
600	190	200	360	170	289	741	490	1264	827	930	100	370	234	1134
700	200	215	392	190	315	751	540	1284	879	901	100	400	290	1142
800	218	230	420	200	342	851	554	1426	942	947	110	420	350	1418
900	242	255	466	220	368	851	580	1488	1023	1023	120	440	464	1810
1000	260	270	490	240	399	851	614	1532	1103	1107	120	460	559	2385
1250	285	300	510	260	452	931	650	1666	1227	1182	150	530	782	3110
1550	285	320	550	280	483	950	680	1710	1300	1253	150	560	918	3655

CAD RFID

* Standard certification for shackles \geq WLL 400 t

** For shackles \geq WLL 75 t and \leq WLL 600 t available with or without LROS.
For shackles \geq WLL 700 t available with LROS

*** With additional charges