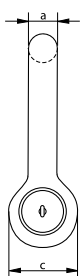
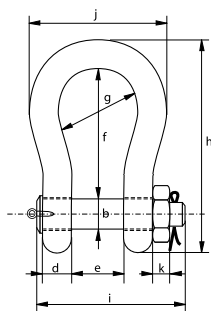


P-6036



Green Pin® Heavy Duty Bow Shackle BN

High load capacity bow shackle with safety bolt

- **Material:** bow and pin alloy steel, grade 8 quenched and tempered
- **Safety Factor:** MBL equals 5 x WLL
- **Standard:** ASME B30.26
- **Finish:** shackle bow painted silver, pin painted green
- **Temperature range:** -40 °C up to +200 °C ≤ WLL 600 t
- **Certification:** 2.1 2.2 3.1 MTC^a CE IIA **Optional**^{***}: MTC^b * LROS^{**} MPI^a US^a
- **Article code:** scan QR code to see article codes

Scan for additional product details



working load limit	diameter bow	diameter pin	diameter eye	width eye	width inside	length inside	width bow	length	length bolt	width	thickness nut	weight pin	weight each
t	a mm	b mm	c mm	d mm	e mm	f mm	g mm	h mm	i mm	j mm	k mm	kg	kg
120	95	95	204	95	147	400	238	644	453	428	50	28.1	114
150	105	108	235	105	169	410	275	686	496	485	50	39.2	155
200	120	130	270	120	179	513	290	833	564	530	71	69.2	235
250	130	140	284	130	205	554	305	896	614	565	71	85.5	295
300	140	150	308	140	205	618	305	987	644	585	81	102	366
400	170	175	376	164	231	669	325	1115	698	665	70	151	620
500	180	185	398	164	256	719	350	1191	728	710	70	173	720
600	200	205	444	189	282	719	375	1244	810	775	70	228	975
700	210	215	454	204	308	718	400	1263	870	820	70	265	1075
800	210	220	464	204	308	718	400	1270	870	820	70	276	1100
900	220	230	485	215	328	718	420	1296	920	860	70	319	1250
1000	240	240	515	215	349	718	420	1336	940	900	70	351	1460
1250	260	270	585	230	369	768	450	1456	1025	970	70	481	1940
1500	280	290	625	230	369	818	450	1556	1025	1010	70	556	2305

CAD RFID

* Standard certification for shackles ≥ WLL 400 t

** For shackles ≥ WLL 120 t and ≤ WLL 600 t available with or without LROS.
For shackles ≥ WLL 700 t available with LROS

*** With additional charges